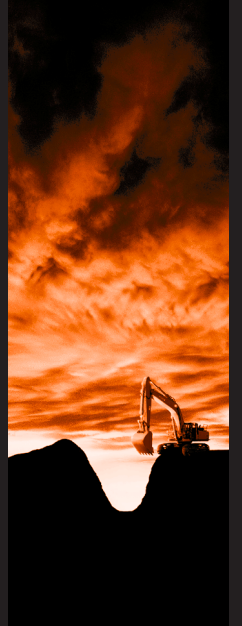
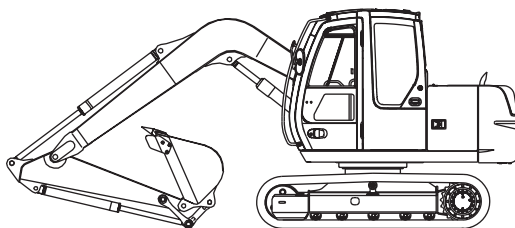


HITACHI ZAXIS70

engine rated power
39 kW (52 HP)

operating weight
6 400 - 7 570 kg

bucket capacity
PCSA heaped : 0.13 - 0.33 m³
CECE heaped : 0.12 - 0.29 m³



HITACHI

Engine

Model	Isuzu AA-4JG1
Type	4-cycle water-cooled, direct injection
No. of cylinders	4
Rated power	
DIN 6271, net	40.5 kW (55 PS) at 2 100 min ⁻¹ (rpm)
SAE J1349, net	39 kW (52 HP) at 2 100 min ⁻¹ (rpm)
Maximum torque	192 N·m (19.6 kgf·m) at 1 800 min ⁻¹ (rpm)
Piston Displacement	3.059 l
Bore and stroke	95.4 mm x 107 mm
Batteries	2 x 12 V / 52 Ah
Governor	Mechanical speed control with stepping motor

Hydraulic system

- Swing-independent 3-pump hydraulic system
- OHS (Optimum Hydraulic System) assures fully independent and combined operations
- New-type automatic 2-speed motor increases traction force and travel speed

Main pumps	3 variable displacement axial piston pumps
Maximum oil flow	2 x 63 l/min 1 x 52.5 l/min
Pilot pump	1 gear pump
Maximum oil flow	22.5 l/min

HYDRAULIC MOTORS

Travel	2 variable displacement axial piston motors
Swing	1 axial piston motor

RELIEF VALVE SETTINGS

Implement circuit	26.0 MPa (265 kgf/cm ²)
Swing circuit	22.6 MPa (230 kgf/cm ²)
Travel circuit	31.4 MPa (320 kgf/cm ²)
Pilot circuit	3.9 MPa (40 kgf/cm ²)

HYDRAULIC CYLINDERS

High-strength piston rods and tubes. Cylinder cushion mechanisms provided in boom and arm cylinders to absorb shock at stroke ends.

DIMENSIONS

	Qty.	Bore	Rod diameter
Boom	1	115 mm	65 mm
Arm	1	95 mm	60 mm
Bucket	1	85 mm	55 mm

HYDRAULIC FILTERS

Hydraulic circuits use high-quality hydraulic filters. A suction filter is incorporated in the suction line, and full-flow filters in the return line and swing/travel motor drain lines.

Controls

Pilot controls. Hitachi's original shockless valve and quick warm-up system built in the pilot circuit.	
Implement levers	2
Travel levers with pedals	2

Upper structure

REVOLVING FRAME

Welded sturdy box construction, using heavy-gauge steel plates for ruggedness. D-section frame for resistance to deformation.

SWING MECHANISM

Axial piston motor with planetary reduction gear is bathed in oil. Swing circle is single-row, shear-type ball bearing with induction-hardened internal gear. Internal gear and pinion gear are immersed in lubricant. Swing parking brake is spring-set/hydraulic-released disc type.

Swing speed	11.3 min ⁻¹ (rpm)
-------------	------------------------------

OPERATOR'S CABIN

Independent spacious cabin, 1 005 mm wide by 1 675 mm high, conforming to ISO Standards. Reinforced glass windows on 4 sides for visibility. Front windows (upper and lower) can be opened. Reclining seat with armrests; adjustable with or without control levers.

Undercarriage

TRACKS

Tractor-type undercarriage. Welded track frame using selected materials. Side frame welded to track frame. Lubricated track rollers, idlers, and sprockets with floating seals. Track shoes with triple grousers made of induction-hardened rolled alloy. Flat and triangular shoes are also available. Heat-treated connecting pins with dirt seals. Hydraulic (grease) track adjusters with shock-absorbing recoil springs.

NUMBERS OF ROLLERS AND SHOES ON EACH SIDE

Upper rollers	1
Lower rollers	5
Track shoes	38 : ZAXIS70 40 : ZAXIS70LC

TRACTION DEVICE

Each track driven by 2-speed axial piston motor through planetary reduction gear for counterrotation of the tracks. Sprockets are replaceable. Parking brake is spring-set/hydraulic-released disc type. Travel shockless relief valve built in travel motor absorbs shocks when stopping travel.

Automatic transmission system: High-Low.

Travel speeds	High: 0 to 5.0 km/h Low: 0 to 3.4 km/h
Maximum traction force	47.8 kN (4 870 kgf)
Gradeability	35° (70%) continuous

Service refill capacities

Fuel tank	135.00 l
Engine coolant	9.50 l
Engine oil	12.00 l
Travel final device (each side)	2.50 l
Hydraulic system	100.00 l
Hydraulic tank (Reference oil level)	60.00 l

Weights and ground pressure

ZAXIS70 / 70LC (WITHOUT BLADE):

Equipped with 3.72 m monoblock boom, 1.62 m arm and 0.28 m³ (PCSA heaped) for ZAXIS70, 0.33 m³ (PCSA heaped) for ZAXIS70LC bucket.

Shoe type	Shoe width	Operating weight	Ground pressure
Triple grouser	450 mm	6 400 kg	29 kPa (0.30 kgf/cm ²)
Triple grouser	450 mm	6 500 kg	28 kPa (0.29 kgf/cm ²)
Triple grouser	600 mm	6 560 kg	22 kPa (0.23 kgf/cm ²)
Triple grouser	600 mm	6 670 kg	21 kPa (0.22 kgf/cm ²)
Pad	450 mm	6 390 kg	29 kPa (0.30 kgf/cm ²)
Pad	450 mm	6 490 kg	28 kPa (0.29 kgf/cm ²)
Rubber	450 mm	6 350 kg	29 kPa (0.30 kgf/cm ²)
Rubber	450 mm	6 450 kg	28 kPa (0.28 kgf/cm ²)
Flat	450 mm	6 560 kg	30 kPa (0.31 kgf/cm ²)
Flat	450 mm	6 670 kg	29 kPa (0.30 kgf/cm ²)

ZAXIS70 / 70LC (WITH BLADE):

Equipped with 3.72 m monoblock boom, 1.62 m arm and 0.28 m³ (PCSA heaped) for ZAXIS70, 0.33 m³ (PCSA heaped) for ZAXIS70LC bucket.

Shoe type	Shoe width	Operating weight	Ground pressure
Triple grouser	450 mm	6 970 kg	32 kPa (0.33 kgf/cm ²)
Triple grouser	450 mm	7 070 kg	30 kPa (0.31 kgf/cm ²)
Pad	450 mm	6 960 kg	32 kPa (0.33 kgf/cm ²)
Pad	450 mm	7 060 kg	30 kPa (0.31 kgf/cm ²)
Rubber	450 mm	6 920 kg	32 kPa (0.33 kgf/cm ²)
Rubber	450 mm	7 020 kg	30 kPa (0.31 kgf/cm ²)

Figures in are data on the ZAXIS70LC.

Weights of the basic machines [including 700 kg counter-weight and triple grouser shoes, excluding front-end attachment, fuel, hydraulic oil, engine oil and coolant etc.] are:

WITHOUT BLADE

ZAXIS70 5 050 kg with 450 mm shoes
 ZAXIS70LC 5 130 kg with 450 mm shoes

WITH BLADE

ZAXIS70 5 620 kg with 450 mm shoes
 ZAXIS70LC 5 700 kg with 450 mm shoes

ZAXIS70 / 70LC WITH OFF-SET FRONT (WITHOUT BLADE):

Equipped with 1.62 m arm and 0.28 m³ (PCSA heaped) bucket.

Shoe type	Shoe width	Operating weight	Ground pressure
Triple grouser	450 mm	6 920 kg	32 kPa (0.33 kgf/cm ²)
Triple grouser	450 mm	7 000 kg	30 kPa (0.31 kgf/cm ²)
Triple grouser	600 mm	7 080 kg	25 kPa (0.26 kgf/cm ²)
Triple grouser	600 mm	7 170 kg	23 kPa (0.24 kgf/cm ²)
Pad	450 mm	6 910 kg	32 kPa (0.33 kgf/cm ²)
Pad	450 mm	6 990 kg	30 kPa (0.31 kgf/cm ²)
Rubber	450 mm	6 870 kg	32 kPa (0.33 kgf/cm ²)
Rubber	450 mm	6 950 kg	30 kPa (0.31 kgf/cm ²)
Flat	450 mm	7 080 kg	33 kPa (0.34 kgf/cm ²)
Flat	450 mm	7 170 kg	31 kPa (0.32 kgf/cm ²)

ZAXIS70 / 70LC WITH OFF-SET FRONT (AND BLADE):

Equipped with 1.62 m arm and 0.28 m³ (PCSA heaped) bucket.

Shoe type	Shoe width	Operating weight	Ground pressure
Triple grouser	450 mm	7 490 kg	35 kPa (0.36 kgf/cm ²)
Triple grouser	450 mm	7 570 kg	33 kPa (0.34 kgf/cm ²)
Pad	450 mm	7 480 kg	34 kPa (0.35 kgf/cm ²)
Pad	450 mm	7 560 kg	33 kPa (0.34 kgf/cm ²)
Rubber	450 mm	7 440 kg	35 kPa (0.36 kgf/cm ²)
Rubber	450 mm	7 520 kg	33 kPa (0.34 kgf/cm ²)

Figures in are data on the ZAXIS70LC.

Weights of the basic machines [including 800 kg counter-weight and triple grouser shoes, excluding front-end attachment, fuel, hydraulic oil, engine oil and coolant etc.] are:

WITHOUT BLADE

ZAXIS70 5 060 kg with 450 mm shoes
 ZAXIS70LC 5 140 kg with 450 mm shoes

WITH BLADE

ZAXIS70 5 630 kg with 450 mm shoes
 ZAXIS70LC 5 710 kg with 450 mm shoes

Backhoe attachments

Boom and arms are of all-welded, box-section design. 3.72 m monoblock boom, off-set front, 1.62 m and 2.12 m arms are available.

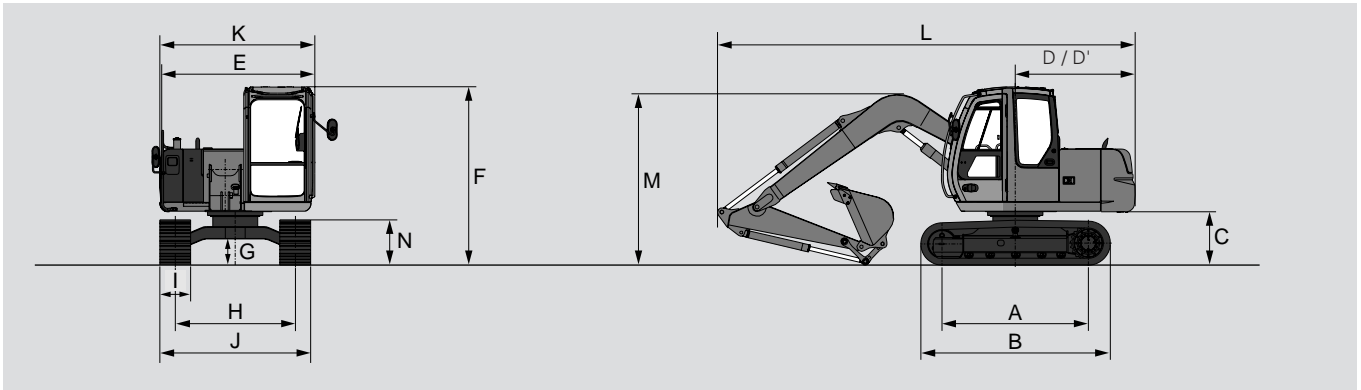
Bucket is of all-welded steel structure. Side clearance adjust mechanism provided on the bucket joint bracket.

BUCKETS

Capacity PCSA heaped	Width Without side cutters	Weight
0.24 m ³	500 mm	231 kg
0.27 m ³	600 mm	251 kg
0.32 m ³	700 mm	286 kg
0.38 m ³	800 mm	306 kg

SPECIFICATIONS

Dimensions



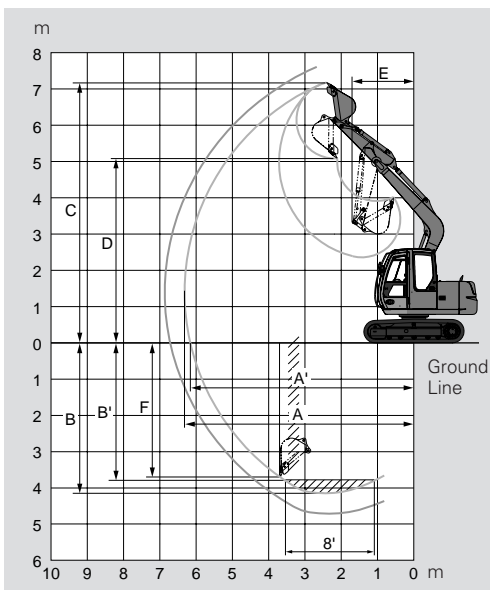
Unit: mm

	ZAXIS70	ZAXIS70LC	ZAXIS70 with Pad crawler	ZAXIS70LC with Pad crawler
A Sprocket centre to idler centre	2 140	2 290	2 140	2 290
B Undercarriage length	2 765	2 920	2 765	2 920
*C Counterweight clearance	760	760	760	760
D Rear-end swing radius	1 750	1 750	1 750	1 750
D' Rear-end length	1 750	1 750	1 750	1 750
E Overall width of upper structure	2 260	2 260	2 260	2 260
F Overall height of cabin	2 600	2 600	2 630	2 630
*G Min. ground clearance	360	360	410	410
H Track gauge	1 750	1 870	1 750	1 870
I Track shoe width	G 450	G 450	P 450	P 450
J Undercarriage width	2 200	2 320	2 200	2 320
K Overall width	2 260	2 320	2 260	2 320
L Overall length				
With 1.62 m arm	6 080	6 080	6 080	6 080
With 2.12 m arm	6 120	6 120	6 120	6 120
M Overall height of boom				
With 1.62 m arm	2 550	2 550	2 550	2 550
With 2.12 m arm	2 880	2 880	2 880	2 880
N Track height	655	655	715	715

* Excluding track shoe lug. G: Triple grouser shoe P: Pad crawler

Working ranges

Unit: mm

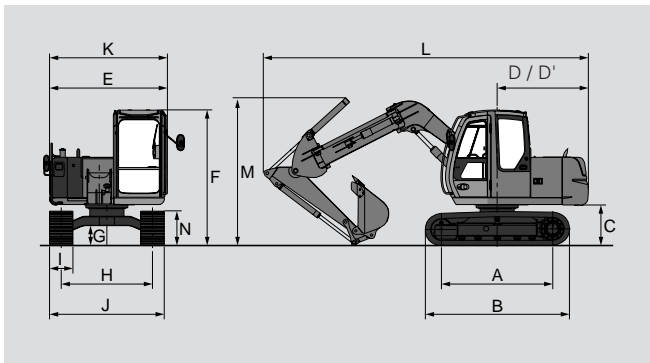


	ZAXIS70 / ZAXIS70LC	ZAXIS70 / ZAXIS70LC	ZAXIS70 / ZAXIS70LC with Pad crawler	ZAXIS70 / ZAXIS70LC with Pad crawler
Arm length	1.62 m	2.12 m	1.62 m	2.12 m
A Max. digging reach	6 320	6 810	6 320	6 810
A' Max. digging reach (on ground)	6 170	6 670	6 160	6 660
B Max. digging depth	4 170	4 670	4 120	4 620
B' Max. digging depth (8° level)	3 820	4 320	3 770	4 270
C Max. cutting height	7 150	7 550	7 200	7 600
D Max. dumping height	5 060	5 450	5 110	5 500
E Min. swing radius	1 720	2 080	1 720	2 080
F Max. vertical wall	3 730	4 280	3 680	4 230
Bucket digging force ISO	55 kN (5 600 kgf)	55 kN (5 600 kgf)	55 kN (5 600 kgf)	55 kN (5 600 kgf)
Bucket digging force SAE : PCSA	47 kN (4 800 kgf)	47 kN (4 800 kgf)	47 kN (4 800 kgf)	47 kN (4 800 kgf)
Arm crowd force ISO	38 kN (3 900 kgf)	32 kN (3 300 kgf)	38 kN (3 900 kgf)	32 kN (3 300 kgf)
Arm crowd force SAE : PCSA	36 kN (3 700 kgf)	31 kN (3 200 kgf)	36 kN (3 700 kgf)	31 kN (3 200 kgf)

Excluding track shoe lug.

SPECIFICATIONS

Dimensions: Offset front



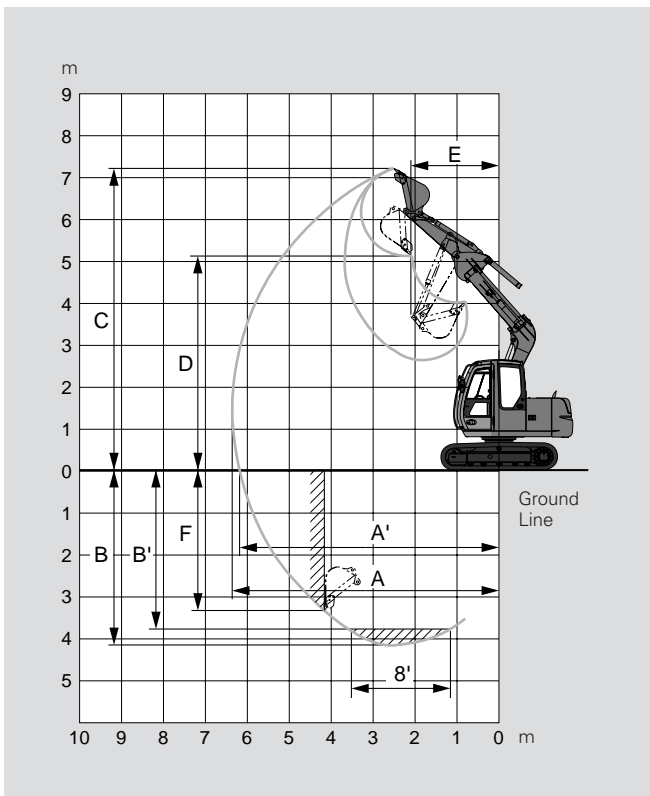
Unit: mm

	ZAXIS70 / 70LC with Off-set front
A Sprocket centre to idler centre	2 140 / 2 290
B Undercarriage length	2 765 / 2 920
*C Counterweight clearance	760 / 760
D Rear-end swing radius	1 750 / 1 750
D' Rear-end length	1 750 / 1 750
E Overall width of upper structure	2 260 / 2 260
F Overall height of cabin	2 600 / 2 600
*G Min. ground clearance	360 / 360
H Track gauge	1 750 / 1 870
I Track shoe width	G 450 / G 450
J Undercarriage width	2 200 / 2 320
K Overall width	2 260 / 2 320
L Overall length	
With 1.62 m (5'4") arm	6 200 / 6 200
M Overall height of boom	
With 1.62 m (5'4") arm	2 810 / 2 810
N Track height	
With triple grouser shoes	655 / 655

* Excluding track shoe lug.

G: Triple grouser shoe

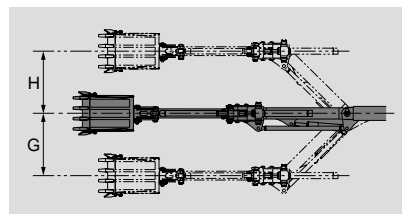
Working ranges: Offset front



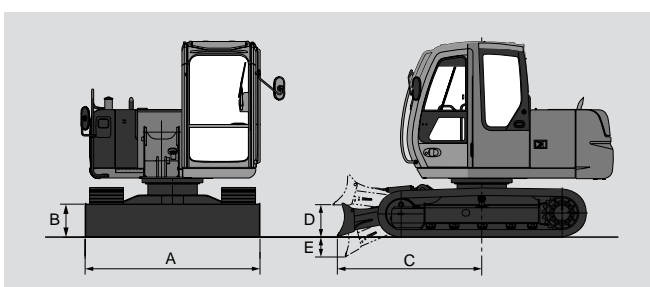
Unit: mm

	ZAXIS70 / 70LC with Off-set front	ZAXIS70 / 70LC with Off-set front
Arm length	1.62 m	1.62 m
Off-set distance	0 m	Max.
A Max. digging reach	6 320	5 875
A' Max. digging reach (on ground)	6 165	5 840
B Max. digging depth	4 160	3 710
B' Max. digging depth (8' level)	3 780	3 330
C Max. cutting height	7 130	6 775
D Max. dumping height	5 050	4 700
E Min. swing radius	2 100	2 100 / 2 260*
F Max. vertical wall	3 550	3 090
G Left side off-set distance	–	1 150
H Right side off-set distance	–	1 150
Bucket digging force ISO	55 kN (5 600 kgf)	
Bucket digging force SAE : PCSA	47 kN (4 800 kgf)	
Arm crowd force ISO	38 kN (3 900 kgf)	
Arm crowd force SAE : PCSA	36 kN (3 700 kgf)	

* Left/Right side off-set.



ZAXIS70 / 70LC with dozer blade (Option)



Equipped with 3.72 m boom, 1.62 m arm, 450 mm triple grouser shoe and 0.28 m³ (PCSA heaped) for ZAXIS70 bucket.

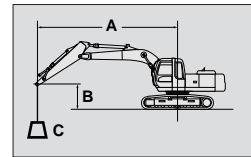
Operating weight STD: 6 870 kg
LC: 6 970 kg

Ground pressure STD: 32 kPa (0.33 kgf/cm²)
LC: 30 kPa (0.35 kgf/cm²)

A Overall width of blade 2 320 mm
B Overall height of blade 435 mm
C Blade distance 1 910 mm
D Maximum raising height above ground 400 mm
E Maximum lowering depth from ground 280 mm

LIFTING CAPACITIES

Metric measure



A: Load radius
B: Load point height
C: Lifting capacity

ZAXIS70 MONOBLOCK BOOM



Rating over-side or 360 degrees



Rating over-front

Unit: kg

Conditions	Load point height	Load radius								At max. reach		
		2 m		3 m		4 m		5 m		meter		
Arm 1.62 m Shoe 450 mm	2 m			2 810	2 250	1 810	1 470			1 200	980	5.22
	0 m			2 620	2 060	1 700	1 370			1 210	990	5.07
	-1 m	*4 380	4 070	2 600	2 050	1 680	1 350			1 350	1 100	4.68
Arm 2.12 m Shoe 450 mm	4 m			*1 360	*1 360	*1 450	*1 450	1 340	1 100	*1 270	1 060	5.10
	2 m			*2 460	2 290	1 820	1 480	1 290	1 050	1 040	850	5.71
	0 m	*2 420	*2 420	2 610	2 050	1 690	1 350	1 220	990	1 050	850	5.58
	-1 m	*3 730	*3 730	2 570	2 010	1 660	1 330	1 210	970	1 140	920	5.22
	-3 m	*4 010	*4 010	2 620	2 070					1 920	1 540	3.69

ZAXIS70 OFF-SET BOOM

Unit: kg

Conditions	Load point height	Load radius								At max. reach		
		2 m		3 m		4 m		5 m		meter		
Arm 1.62 m Shoe 450 mm	4 m			*1 680	*1 680	*1 580	1 570			1 510	1 220	4.55
	2 m			*2 560	2 110	1 720	1 360	1 190	940	1 100	870	5.22
	0 m			2 320	1 760	1 510	1 170	1 100	850	1 070	830	5.07
	-1 m	*4 000	3 510	2 300	1 730	1 490	1 140			1 190	920	4.68

ZAXIS70LC MONOBLOCK BOOM

Unit: kg

Conditions	Load point height	Load radius								At max. reach		
		2 m		3 m		4 m		5 m		meter		
Arm 1.62 m Shoe 450 mm	2 m			*2 820	2 480	2 010	1 610			1 330	1 070	5.22
	0 m			2 960	2 290	1 900	1 510			1 350	1 080	5.07
	-1 m	*4 380	*4 380	2 940	2 270	1 880	1 490			1 510	1 200	4.68
Arm 2.12 m Shoe 450 mm	4 m			*1 360	*1 360	*1 450	*1 450	1 480	1 200	*1 270	1 160	5.10
	2 m			*2 460	*2 460	*1 960	1 620	1 430	1 150	1 160	930	5.71
	0 m	*2 420	*2 420	2 950	2 280	1 880	1 490	1 360	1 090	1 160	930	5.58
	-1 m	*3 730	*3 730	2 910	2 240	1 850	1 460	1 350	1 070	1 270	1 010	5.22
	-3 m	*4 010	*4 010	*2 790	2 290					*2 120	1 690	3.69

ZAXIS70LC OFF-SET BOOM

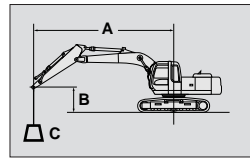
Unit: kg

Conditions	Load point height	Load radius								At max. reach		
		2 m		3 m		4 m		5 m		meter		
Arm 1.62 m Shoe 450 mm	4 m			*1 680	*1 680	*1 580	*1 580			*1 590	1 340	4.55
	2 m			*2 560	2 340	1 920	1 510	1 330	1 040	1 230	960	5.22
	0 m			2 660	1 980	1 710	1 310	1 230	950	1 210	930	5.07
	-1 m	*4 000	*4 000	2 640	1 960	1 680	1 280			1 350	1 030	4.68

- Notes:
1. Ratings are based on ISO 10567.
 2. Lifting capacity of the ZAXIS Series does not exceed 75% of tipping load with the machine on firm, level ground or 87% full hydraulic capacity.
 3. The load point is a hook (not standard equipment) located on the back of the bucket.
 4. *Indicates load limited by hydraulic capacity.
 5. 0 m = Ground.

LIFTING CAPACITIES

Metric measure



A: Load radius
B: Load point height
C: Lifting capacity

ZAXIS70 BLADE (DOWN) MONOBLOCK BOOM



Rating over-side or 360 degrees



Rating over-front

Unit: kg

Conditions	Load point height	Load radius								At max. reach		
		2 m		3 m		4 m		5 m		meter		
Arm 1.62 m Shoe 450 mm	2 m			*2 820	2 440	*2 170	1 600			*1 530	1 070	5.22
	0 m			*3 540	2 250	*2 600	1 500			*1 850	1 080	5.07
	-1 m	*4 380	*4 380	*3 500	2 240	*2 600	1 480			*2 150	1 200	4.68
Arm 2.12 m Shoe 450 mm	4 m			*1 360	*1 360	*1 450	*1 450	*1 540	1 200	*1 270	1 150	5.10
	2 m			*2 460	*2 460	*1 960	1 610	*1 730	1 150	*1 270	930	5.71
	0 m	*2 420	*2 420	*3 420	2 240	*2 500	1 480	*2 010	1 090	*1 480	930	5.58
	-1 m	*3 730	*3 730	*3 510	2 200	*2 590	1 450	*2 030	1 070	*1 730	1 010	5.22
	-3 m	*4 010	*4 010	*2 790	2 260					*2 120	1 680	3.69

ZAXIS70 BLADE (DOWN) OFF-SET BOOM

Unit: kg

Conditions	Load point height	Load radius								At max. reach		
		2 m		3 m		4 m		5 m		meter		
Arm 1.62 m Shoe 450 mm	4 m			*1 680	*1 680	*1 580	*1 580			*1 590	1 320	4.55
	2 m			*2 560	2 290	*1 950	1 490	*1 680	1 040	*1 640	960	5.22
	0 m			*3 100	1 940	*2 280	1 290	*1 800	940	*1 770	920	5.07
	-1 m	*4 000	3 860	*3 020	1 920	*2 250	1 270			*1 860	1 020	4.68

ZAXIS70LC BLADE (DOWN) MONOBLOCK BOOM

Unit: kg

Conditions	Load point height	Load radius								At max. reach		
		2 m		3 m		4 m		5 m		meter		
Arm 1.62 m Shoe 450 mm	2 m			*2 820	2 690	*2 170	1 750			*1 530	1 170	5.22
	0 m			*3 540	2 500	*2 600	1 640			*1 850	1 180	5.07
	-1 m	*4 380	*4 380	*3 500	2 480	*2 600	1 630			*2 150	1 320	4.68
Arm 2.12 m Shoe 450 mm	4 m			*1 360	*1 360	*1 450	*1 450	*1 540	1 310	*1 270	1 260	5.10
	2 m			*2 460	*2 460	*1 960	1 760	*1 730	1 260	*1 270	1 020	5.71
	0 m	*2 420	*2 420	*3 420	2 490	*2 500	1 630	*2 010	1 190	*1 480	1 020	5.58
	-1 m	*3 730	*3 730	*3 510	2 450	*2 590	1 600	*2 030	1 180	*1 730	1 110	5.22
	-3 m	*4 010	*4 010	*2 790	2 500					*2 120	1 850	3.69

ZAXIS70LC BLADE (DOWN) OFF-SET BOOM

Unit: kg

Conditions	Load point height	Load radius								At max. reach		
		2 m		3 m		4 m		5 m		meter		
Arm 1.62 m Shoe 450 mm	4 m			*1 680	*1 680	*1 580	*1 580			*1 590	1 460	4.55
	2 m			*2 560	2 550	*1 950	1 650	*1 680	1 150	*1 640	1 060	5.22
	0 m			*3 100	2 190	*2 280	1 450	*1 800	1 050	*1 770	1 030	5.07
	-1 m	*4 000	*4 000	*3 020	2 170	*2 250	1 420			*1 860	1 150	4.68

- Notes:
1. Ratings are based on ISO 10567.
 2. Lifting capacity of the ZAXIS Series does not exceed 75% of tipping load with the machine on firm, level ground or 87% full hydraulic capacity.
 3. The load point is a hook (not standard equipment) located on the back of the bucket.
 4. * Indicates load limited by hydraulic capacity.
 5. 0 m = Ground.

Standard Equipment

Standard equipment may vary by country, so please consult your Hitachi dealer for details.

ENGINE

- P mode control
- E mode control
- 30 A alternator
- Dry-type air filter with evacuator valve (with safety element)
- Cartridge-type engine oil filter
- Cartridge-type fuel filter
- Air cleaner double filters
- Radiator and oil cooler with dust protective net
- Radiator reserve tank
- Fan guard
- Isolation-mounted engine
- Auto-idle system

HYDRAULIC SYSTEM

- E-P control system
- Quick warm-up system for pilot circuit
- Shockless valve in pilot circuit
- Boom anti-drift valve
- Control valve with main relief valve
- Extra port for control valve
- Suction filter
- Full-flow filter
- Pilot filter

CABIN

- CRES (Corner Reinforced Structure) cabin
- OPG top guard Level I (ISO) compliant cabin
- All-weather sound-suppressed steel cabin
- Reinforced, tinted glass windows
- 4 fluid-filled elastic mounts
- Front window-upper, lower and left side windows can be opened
- Intermittant windshield wipers
- Front window washer
- Footrest
- Electric double horn
- AM - FM radio with digital clock
- Auto-idle
- Seat belt
- Drink holder
- Cigar lighter
- Ashtray
- Storage box
- Glove compartment
- Fire extinguisher bracket
- Floor mat
- Pilot control shut-off lever
- Engine stop knob
- Auto control air conditioner
- Transparency roof with roll curtain
- Suspension seat

MONITOR SYSTEM

- Meters: Hourmeter and trip-meter, engine coolant temperature gauge and fuel gauge
- Warning lamps: Alternator charge, engine oil pressure, engine overheat, air filter restriction and minimum fuel level
- Pilot lamps: Engine preheat, work light, auto-idle
- Alarm buzzers: Engine oil pressure and engine overheat

LIGHTS

- 2 working lights

UPPER STRUCTURE

- Undercover
- 700 kg counterweight
- Fuel level float
- Hydraulic oil level gauge
- Tool box
- Rearview mirror (right & left side)
- Swing parking brake

UNDERCARRIAGE

- Travel parking brake
- Travel motor covers
- Hydraulic track adjuster

- Bolt-on sprocket
- Upper rollers and lower rollers
- Reinforced track links with pin seals

FRONT ATTACHMENTS

- HN bushing
- WC thermal spraying
- Bucket clearance adjust mechanism
- Monolithically cast bucket link A
- Centralized lubrication system
- Dirt seal on all bucket pins

MISCELLANEOUS

- Standard tool kit
- Lockable machine covers
- Lockable fuel filling cap
- Handrails
- Travel direction mark on track frame
- Onboard ICX

Optional Equipment

Optional equipment may vary by country, so please consult your Hitachi dealer for details.

CABIN

- Front glass lower guard
- Front glass upper guard
- Overhead guard
- OPG top and front guard Level II (ISO) complied cabin
- Vandal cover
- Suspension seat with heater
- Airsuspension seat with heater
- Rain guard
- Sun visor
- Additional fuse box
- Immobilizer key
- 12 V power source

LIGHTS

- Additional cabin roof front lights
- Additional cabin roof rear lights
- Rotating lamp
- Additional boom light with cover

UNDERCARRIAGE

- Track undercover
- Blade cutting edge fix type (width : 2 320 mm and 2 450 mm) cutting edge replaceable type (width : 2 320 mm)

ATTACHMENT

- Hammer and crusher piping
- Parts for hammer
- Parts for hammer and crusher
- Parts for 2 speed selector
- Assist piping
- Additional pump (53 l/min)
- Reinforced link B
- Reinforced arm
- Quick coupler piping

OTHERS

- Hose rupture valves
- Overload warning device
- Electric fuel refilling pump
- Fuel double filters
- High-performance full-flow filter (with restriction indicator)
- Bio oil
- 40 A Alternator

Hitachi Construction Machinery (Europe) NV

Souvereinstraat 16, 4903 RH Oosterhout, P.O. Box 404, 4900 AK Oosterhout, The Netherlands
T +31-(0)162 48 44 00, F +31-(0)162 45 74 53, www.hcme.com

Siciliëweg 5, Haven 5112, 1045 AT Amsterdam, P.O. Box 59239, 1040 KE Amsterdam, The Netherlands
T +31-(0)20 44 76 700, F +31-(0)20 33 44 045, www.hcme.com



**Breaking
new
ground**

HITACHI